

Nature Walk 3000

feet above sea level

A Nature Walk On Cloud

Business Account



WhatsApp +65 8710 7707



www.707-inc.com

Favored ★★★★★ Sold 98 888

所提供的行程及价格仅供参考，最终行程可能根据实际情况进行调整。受条款及细则约束。*

The provided itinerary and price are for reference purposes only; the final itinerary may be adjusted based on the actual circumstances. Terms and conditions apply. *

Resorts World Awana

云顶世界阿娃娜



Package Include 配套包括:

Two Way Coach : Singapore Genting Singapore

来回车程：新加坡 - 云顶 - 新加坡

Stay At Hotel x 2 (Twin)

入住酒店 (两人一房)



SkyWay Return Transfer Once Only (02 Pax)

一趟来回缆车服务 (两人)

Daily Buffet Breakfast at Jom Makan (02 Pax)

每日自助早餐于 Jom Makan (两人)

Open Dated Theme Park Tickets \$43 日期开放式主题公园门票

所提供的行程及价格仅供参考，最终行程可能根据实际情况进行调整。受条款及细则约束。*

The provided itinerary and price are for reference purposes only; the final itinerary may be adjusted based on the actual circumstances. Terms and conditions apply. *

Simple Step To Quote 报价步骤

Step 1 : Select Your Bus 选择您的巴士

(Child Below 2 Years Old No Seat Required 2岁以下儿童无需座位)

- One Way 单程
- Two Way Return 返回

Step 2 : Select A Room Type 选择您的房型

- Hotel Room Type 酒店房型

Step 3 : Select Your Check In Date 选择您的入住日期

- Base On Colour Season, Per Room Per Night.
- 以颜色区分季节, 每房每晚为准

Step 4 : To Book Provide Detail 预订提供以下资料

Number Of Travelers 出发人数

Hotel Name 酒店名

Check In Date 入住日期

Check Out Date 退房日期

Number Of Hotel Room 酒店房间数量

Bus Date & Timing AM / PM 巴士日期发车时间上午/下午

Remark 备注

- Dynamic Pricing Subject To Change, Limited Allotment 价格有变动的可能,售完为止
- Exclude Tourism & Sustainability Tax, Security Deposit & Travel Insurance
不含旅游税&可持续发展税,押金和旅游保险
- Booking Is Subjected To Availability & Confirmation 一切预订以最终确认书为准
- Terms & Condition Apply 需符合条规

所提供的行程及价格仅供参考, 最终行程可能根据实际情况进行调整。受条款及细则约束。*

The provided itinerary and price are for reference purposes only; the final itinerary may be adjusted based on the actual circumstances. Terms and conditions apply. *

Step 1 : Select Your Bus 选择您的巴士

(Child Below 2 Years Old No Seat Required 2岁以下儿童无需座位)

One Way 单程 (02 Dec 24 Mon) **Bus Transfer: 2 Pax X \$41 = \$82**

Two Way Return 返回 (05 Dec 24 Thu) **Bus Transfer: 2 Pax X \$27 = \$54**

Total Bus Fare 总车费: 2 Pax \$82 + \$54 = \$136

October 十月 2024 --- December 十二月 2024

October 十月 2024				November 十一月 2024				December 十二月 2024			
Date 日期		SG 新加坡 - Genting 云顶	Genting 云顶 - SG 新加坡	Date 日期		SG 新加坡 - Genting 云顶	Genting 云顶 - SG 新加坡	Date 日期		SG 新加坡 - Genting 云顶	Genting 云顶 - SG 新加坡
1	Tue	\$41	\$27	1	Fri	\$43	\$27	1	Sun	\$41	\$32
2	Wed	\$41	\$27	2	Sat	\$41	\$27	2	Mon	\$41	\$27
3	Thu	\$41	\$27	3	Sun	\$41	\$32	3	Tue	\$41	\$27
4	Fri	\$43	\$27	4	Mon	\$41	\$27	4	Wed	\$41	\$27
5	Sat	\$41	\$27	5	Tue	\$41	\$27	5	Thu	\$41	\$27
6	Sun	\$41	\$32	6	Wed	\$41	\$27	6	Fri	\$43	\$27
7	Mon	\$41	\$27	7	Thu	\$41	\$27	7	Sat	\$41	\$27
8	Tue	\$41	\$27	8	Fri	\$43	\$27	8	Sun	\$41	\$32
9	Wed	\$41	\$27	9	Sat	\$41	\$27	9	Mon	\$41	\$27
10	Thu	\$41	\$27	10	Sun	\$41	\$32	10	Tue	\$41	\$27
11	Fri	\$43	\$27	11	Mon	\$41	\$27	11	Wed	\$41	\$27
12	Sat	\$41	\$27	12	Tue	\$41	\$27	12	Thu	\$41	\$27
13	Sun	\$41	\$32	13	Wed	\$41	\$27	13	Fri	\$43	\$27
14	Mon	\$41	\$27	14	Thu	\$41	\$27	14	Sat	\$41	\$27
15	Tue	\$41	\$27	15	Fri	\$43	\$27	15	Sun	\$41	\$32
16	Wed	\$41	\$27	16	Sat	\$41	\$27	16	Mon	\$41	\$27
17	Thu	\$41	\$27	17	Sun	\$41	\$32	17	Tue	\$41	\$27
18	Fri	\$43	\$27	18	Mon	\$41	\$27	18	Wed	\$41	\$27
19	Sat	\$41	\$27	19	Tue	\$41	\$27	19	Thu	\$41	\$27
20	Sun	\$41	\$32	20	Wed	\$41	\$27	20	Fri	\$43	\$27
21	Mon	\$41	\$27	21	Thu	\$41	\$27	21	Sat	\$41	\$27
22	Tue	\$41	\$27	22	Fri	\$43	\$27	22	Sun	\$41	\$32
23	Wed	\$41	\$27	23	Sat	\$41	\$27	23	Mon	\$41	\$27
24	Thu	\$41	\$27	24	Sun	\$41	\$32	24	Tue	\$41	\$27
25	Fri	\$43	\$27	25	Mon	\$41	\$27	25	Wed	\$41	\$27
26	Sat	\$41	\$27	26	Tue	\$41	\$27	26	Thu	\$41	\$27
27	Sun	\$41	\$32	27	Wed	\$41	\$27	27	Fri	\$43	\$27
28	Mon	\$41	\$27	28	Thu	\$41	\$27	28	Sat	\$41	\$27
29	Tue	\$41	\$27	29	Fri	\$43	\$27	29	Sun	\$41	\$32
30	Wed	\$41	\$27	30	Sat	\$41	\$27	30	Mon	\$41	\$27
31	Thu	\$41	\$27					31	Tue	\$41	\$27

所提供的行程及价格仅供参考，最终行程可能根据实际情况进行调整。受条款及细则约束。*

The provided itinerary and price are for reference purposes only; the final itinerary may be adjusted based on the actual circumstances. Terms and conditions apply. *

Step 1 : Select Your Bus 选择您的巴士

(Child Below 2 Years Old No Seat Required 2岁以下儿童无需座位)

One Way 单程 (03 Mar 25 Mon) **Bus Transfer: 2 Pax X \$41 = \$82**

Two Way Return 返回 (05 Mar 25 Wed) **Bus Transfer: 2 Pax X \$27 = \$54**

Total Bus Fare 总车费: 2 Pax \$82 + \$54 = \$136

January 一月 2025 --- March 三月 2025

January 一月 2025				February 二月 2025				March 三月 2025			
Date 日期		SG 新加坡 - Genting 云顶	Genting 云顶 - SG 新加坡	Date 日期		SG 新加坡 - Genting 云顶	Genting 云顶 - SG 新加坡	Date 日期		SG 新加坡 - Genting 云顶	Genting 云顶 - SG 新加坡
1	Wed	\$41	\$27	1	Sat	\$41	\$50	1	Sat	\$41	\$27
2	Thu	\$41	\$27	2	Sun	\$41	\$55	2	Sun	\$41	\$32
3	Fri	\$43	\$27	3	Mon	\$41	\$27	3	Mon	\$41	\$27
4	Sat	\$41	\$27	4	Tue	\$41	\$27	4	Tue	\$41	\$27
5	Sun	\$41	\$32	5	Wed	\$41	\$27	5	Wed	\$41	\$27
6	Mon	\$41	\$27	6	Thu	\$41	\$27	6	Thu	\$41	\$27
7	Tue	\$41	\$27	7	Fri	\$43	\$27	7	Fri	\$43	\$27
8	Wed	\$41	\$27	8	Sat	\$41	\$27	8	Sat	\$41	\$27
9	Thu	\$41	\$27	9	Sun	\$41	\$32	9	Sun	\$41	\$32
10	Fri	\$43	\$27	10	Mon	\$41	\$27	10	Mon	\$41	\$27
11	Sat	\$41	\$27	11	Tue	\$41	\$27	11	Tue	\$41	\$27
12	Sun	\$41	\$32	12	Wed	\$41	\$27	12	Wed	\$41	\$27
13	Mon	\$41	\$27	13	Thu	\$41	\$27	13	Thu	\$41	\$27
14	Tue	\$41	\$27	14	Fri	\$43	\$27	14	Fri	\$43	\$27
15	Wed	\$41	\$27	15	Sat	\$41	\$27	15	Sat	\$41	\$27
16	Thu	\$41	\$27	16	Sun	\$41	\$32	16	Sun	\$41	\$32
17	Fri	\$43	\$27	17	Mon	\$41	\$27	17	Mon	\$41	\$27
18	Sat	\$41	\$27	18	Tue	\$41	\$27	18	Tue	\$41	\$27
19	Sun	\$41	\$32	19	Wed	\$41	\$27	19	Wed	\$41	\$27
20	Mon	\$41	\$27	20	Thu	\$41	\$27	20	Thu	\$41	\$27
21	Tue	\$41	\$27	21	Fri	\$43	\$27	21	Fri	\$43	\$27
22	Wed	\$41	\$27	22	Sat	\$41	\$27	22	Sat	\$41	\$27
23	Thu	\$41	\$27	23	Sun	\$41	\$32	23	Sun	\$41	\$32
24	Fri	\$50	\$27	24	Mon	\$41	\$27	24	Mon	\$41	\$27
25	Sat	\$50	\$27	25	Tue	\$41	\$27	25	Tue	\$41	\$27
26	Sun	\$50	\$27	26	Wed	\$41	\$27	26	Wed	\$41	\$27
27	Mon	\$50	\$27	27	Thu	\$41	\$27	27	Thu	\$41	\$27
28	Tue	\$80	\$27	28	Fri	\$43	\$27	28	Fri	\$55	\$27
29	Wed	\$80	\$27					29	Sat	\$41	\$27
30	Thu	\$50	\$27					30	Sun	\$41	\$35
31	Fri	\$50	\$40					31	Mon	\$41	\$42

所提供的行程及价格仅供参考，最终行程可能根据实际情况进行调整。受条款及细则约束。*

The provided itinerary and price are for reference purposes only; the final itinerary may be adjusted based on the actual circumstances. Terms and conditions apply. *

Step 2 / 3 : Select A Room Type / Check In Date

选择您的房型 / 选择您的入住日期

➤ Hotel Room Type 酒店房型

➤ Base On Color Season, Per Room Per Night. 以颜色区分季节, 每房每晚为准

October (十月) 2024							November (十一月) 2024							December (十二月) 2024						
Sun	Mon	Tue	Wed	Thu	Fri	Sat	Sun	Mon	Tue	Wed	Thu	Fri	Sat	Sun	Mon	Tue	Wed	Thu	Fri	Sat
		1	2	3	4	5						1	2	1	2	3	4	5	6	7
6	7	8	9	10	11	12	3	4	5	6	7	8	9	8	9	10	11	12	13	14
13	14	15	16	17	18	19	10	11	12	13	14	15	16	15	16	17	18	19	20	21
20	21	22	23	24	25	26	17	18	19	20	21	22	23	22	23	24	25	26	27	28
27	28	29	30	31			24	25	26	27	28	29	30	29	30	31				

January (一月) 2025							February (二月) 2025							March (三月) 2025						
Sun	Mon	Tue	Wed	Thu	Fri	Sat	Sun	Mon	Tue	Wed	Thu	Fri	Sat	Sun	Mon	Tue	Wed	Thu	Fri	Sat
			1	2	3	4							1	30	31					1
5	6	7	8	9	10	11	2	3	4	5	6	7	8	2	3	4	5	6	7	8
12	13	14	15	16	17	18	9	10	11	12	13	14	15	9	10	11	12	13	14	15
19	20	21	22	23	24	25	16	17	18	19	20	21	22	16	17	18	19	20	21	22
26	27	28	29	30	31		23	24	25	26	27	28		23	24	25	26	27	28	29

Price Per Room Per Night + Daily Breakfast + 1 x SkyWay

每间客房每晚的价格 + 每日早餐 + 1 x 缆车服务

	Green	Red	Purple
Superior Deluxe (2 Pax 两人一房)	\$ 120	\$ 160	\$ 180
Superior Deluxe Sixers (2 Pax 两人一房)	\$ 150	\$ 180	\$ 230

Example 例子 1 : Resort World Awana – Superior DLX (Entitlement For 2 Pax 两人一房)
Departure 出发: [03/03/25](#)

Coach 巴士 + Hotel 酒店: 3 Days 天 2 Nights 夜 - (2 Pax 人 + 1 Room 房)

Total Bus Fare 车费: 2 Pax 人 \$82 + \$54 = \$136 *

Total Room Fare 总房费: 1 Room 房 \$120 + \$120 = \$240 *

Grand Total 总数: \$136 * + \$240 * = \$376 or Average 平均 \$188 Per Pax 每人

所提供的行程及价格仅供参考, 最终行程可能根据实际情况进行调整。受条款及细则约束。*

The provided itinerary and price are for reference purposes only; the final itinerary may be adjusted based on the actual circumstances. Terms and conditions apply. *

Resort World Awana

2 Days 天 1 Night 夜

Low 淡季

\$128 Per Pax Twin 两人一房

\$188 Per Pax Single 单人房

Peak 旺季

\$154 Per Pax Twin 两人一房

\$234 Per Pax Single 单人房

3 Days 天 2 Nights 夜

Low 淡季

\$188 Per Pax Twin 两人一房

\$308 Per Pax Single 单人房

Peak 旺季

\$234 Per Pax Twin 两人一房

\$394 Per Pax Single 单人房

4 Days 天 3 Nights 夜

Low 淡季

\$248 Per Pax Twin 两人一房

\$428 Per Pax Single 单人房

Peak 旺季

\$314 Per Pax Twin 两人一房

\$554 Per Pax Single 单人房

\$ Per Pax From 每人起

所提供的行程及价格仅供参考，最终行程可能根据实际情况进行调整。受条款及细则约束。*

The provided itinerary and price are for reference purposes only; the final itinerary may be adjusted based on the actual circumstances. Terms and conditions apply. *

Resorts World Awana How To Get There By Van & Skyway Transfer



By Shuttle Bus Operating Hours Daily 7am – 11pm (Hourly)
Shuttle Bus Services Are Complimentary For Our In-house Guests And Run Hourly From Resorts World Awana To Awana Skycentral / Genting Highlands Premium Outlets And Vice Versa.



By Awana Skyway Operating Hours Daily 7am – 11pm
Fly Up Within 10 Minutes On The Awana Skyway To Resorts World Genting. Hop Off The Shuttle Bus At Awana Skycentral And Purchase Your Tickets At The Ticketing Counters, Or Better – Save Some Time By Getting Your Awana Skyway Tickets Online!

所提供的行程及价格仅供参考，最终行程可能根据实际情况进行调整。受条款及细则约束。*

The provided itinerary and price are for reference purposes only; the final itinerary may be adjusted based on the actual circumstances. Terms and conditions apply. *

Resorts World Awana Van Transfer Service

Travel with ease to enjoy our world-class attractions and excitements at Resorts World Genting from Resorts World Awana with our new van transfer service! The van transfer service is available to and from Resorts World Awana to any hotel within Resorts World Genting.

Pick Up & Drop-off Points Lobby ,
Resorts World Awana



First World Hotel
Genting SkyWorlds Hotel
Resort Hotel
Genting Grand Hotel
Highlands Hotel
Crockfords

24 Hour Van Transfer To Hotel Direct



Terms & Conditions

- 1.To reserve, please call +6012 332 6386.
- 2.This service operates on a 24 hours basis.
- 3.Each ride is approximately 15 minutes.
- 4.A one-way trip per passenger is chargeable at RM15.
- 5.A minimum of one (01) hour is required to reserve this service before your desired departure time.
- 6.Each trip allows for a maximum of 10 passengers only.
- 7.Payment for this service may be made at the Reception via credit card or billing to your room.



所提供的行程及价格仅供参考，最终行程可能根据实际情况进行调整。受条款及细则约束。*

The provided itinerary and price are for reference purposes only; the final itinerary may be adjusted based on the actual circumstances. Terms and conditions apply. *



Free Shuttle Service

Perkhidmatan ulang-alik percuma

免费接驳车服务

From / Dari / 出发 AWANA HOTEL 云顶世界阿娃娜	From / Dari / 出发 SWISS GARDEN HOTEL 云顶高原瑞园酒店	From / Dari / 出发 SCAPES HOTEL 云顶高原司格酒店	From / Dari / 出发 GENTING HIGHLANDS PREMIUM OUTLETS 云顶高原名牌折扣购物中心
7am	-	-	7:30am
8am	-	-	8:30am
9am	9:15am	9:30am	9:45am
10am	-	-	10:30am
11am	-	-	11:30am
12nn	-	-	12:30nn
1pm	-	-	1:30pm
3pm	3:15pm	3:30pm	3:45pm
4pm	-	-	4:30pm
5pm	-	-	5:30pm
6pm	-	-	6:30pm
8pm	8:15pm	8:30pm	8:45pm
9pm	-	-	9:30pm
10pm	-	-	10:30pm
11pm	-	-	11:15pm

*The shuttle service is reserved for Resorts World Awana guests only.
Perkhidmatan bas shuttle dikhaskan untuk tetamu Resorts World Awana sahaja. 巴士载送服务只限於云顶世界阿娃娜住客。

*The Management reserves the rights to alter or withdraw any of the above schedules at any time without prior notice.
Pihak Pengurusan berhak untuk mengubah atau menarik balik mana-mana jadual di atas pada bila-bila masa tanpa notis terlebih dahulu. 管理层保留在无需预先知会的情况下更改或取消以上任何时间表的权利。





Welcome to Awana SkyWay!

Fly up in just 10 minutes from the Awana Station at mid-hill to the SkyAvenue Station at the peak. With the same ticket, you get a free stop at the Chin Swee Station, where you can explore the beautiful Chin Swee Caves Temple and its magnificent surroundings at no extra cost

Park and ride

Leave your car at the Awana SkyCentral car park (adjoining Genting Highlands Premium Outlets) so you can board the cable car from the Awana Station.

云天缆车

轻便舒适上顶峰只需十分钟，您能从半山的阿娃娜站抵达山顶的终点云天大道站。此外，您可在清水缆车站免费下车，探索清水岩庙及其优美的风景，再使用同一张车票继续您的旅程到达峰顶，或前往阿娃娜站。

停车半山，改乘缆车轻松攻顶

您可将您的爱车停泊在与云顶高原名牌折扣购物中心毗邻的Awana SkyCentral停车场，然后在阿娃娜站搭乘缆车轻松上山。

AWANA SKYWAY TICKET PRICING

One-way RM10 | Return RM18

- Ride on Standard gondola
- Shared ride (8 – 10 passengers per gondola)
- Normal boarding at Lane C
- Complimentary stopover at Chin Swee Caves Temple

One-way RM16 | Return RM30

- Ride on Standard gondola
- Shared ride (8 – 10 passengers per gondola)
- Express boarding at Lane D
- Complimentary stopover at Chin Swee Caves Temple

云天缆车票价

标准车厢单程 RM10 | 来回 RM18

- 乘坐标准缆车
- 须与其他乘客共乘(每座缆车可容纳8至10名乘客)
- 使用通道 C 登上缆车
- 途中免费停留探索清水岩庙

标准缆车(快速通道登机)单程 RM16 | 来回 RM30

- 乘坐标准缆车
- 须与其他乘客共乘(每座缆车可容纳8至10名乘客)
- 使用快速通道 D 搭乘缆车
- 途中免费停留探索清水岩庙



Awana SkyWay Operating Hours:

Sunday - Wednesday: 7am - 11pm

Thursday - Saturday & Eve of Public Holidays: 7am - 1am

Chin Swee Station Operating Hours:

Daily 8am – 7pm

云天缆车运作时间:

星期一至三及星期日: 上午7时至晚上11时

星期四至六、公假及假前夕: 上午7时至午夜1时

清水岩站运作时间:

每日上午8时至下午7时 **One-way RM10 | Return RM18**



Business Account

WhatsApp +65 8710 7707



www.707-inc.com

所提供的行程及价格仅供参考，最终行程可能根据实际情况进行调整。受条款及细则约束。*

The provided itinerary and price are for reference purposes only; the final itinerary may be adjusted based on the actual circumstances. Terms and conditions apply. *

Genting Coach Schedule - Daily Departure

云顶 - 时间表每日出发

Departure 出发新 - 马 SG - MY	Singapore SG 新加坡	↔	Genting MY 云顶	Return 回程马 - 新 MY - SG	
		Alight 下车 : Hilltop Bus Terminal BT3			
6:40 AM	People's Park Centre 168 Coffee Shop 牛车水珍珠大厦 168 咖啡店			12:00 PM 03:15 PM	
7:00 AM 10:30 PM	Kovan Interchange Bus Terminal 高文巴士转换站			10:45 AM 12:05 PM	
7:20 AM 9:00 PM	Ban San Street / Queen Street 170 Bus Terminal 万山街 / 奎因街 170 巴士总站			10:00 AM 12:20 PM	
7:05 AM 9:15 PM	Boon Lay Shopping Centre @ Savoy Theatre 文礼购物中心 @ Savoy Theatre			10:05 AM 12:15 PM	
7:35 AM	Jurong East Genting Hotel Side Road 裕廊东云顶酒店路旁			10:45 AM 12:10 PM 1:30 PM	
10.10 AM * 11:00 PM	Harbourfront Centre Coach Bay 1 2 3 港湾中心巴士停车场 1 2 3			10:30 AM 1:30 PM	
		Singapore SG 新加坡	↔	Resort World Awana MY	
		Alight 下车 : Resort World Awana			
10:10 AM	Harbourfront Centre Coach Bay 1 2 3 港湾中心巴士停车场 1 2 3			NIL*	
		Malacca 马六甲	↔	Genting 云顶	
10:05 AM	707 Hub / Estadia / Hatten Hotel Coach Bay 马六甲 707 中心 / 雅胜 / 惠胜酒店巴士总站			12:00 PM 3:30 PM	

所提供的行程及价格仅供参考，最终行程可能根据实际情况进行调整。受条款及细则约束。*

The provided itinerary and price are for reference purposes only; the final itinerary may be adjusted based on the actual circumstances. Terms and conditions apply. *

Interior 内部 (2 + 1) 27 - 30 Seater 座位



Coach Fleets 车队



Gold Class



Recline Seat



USB



Wifi



Air Suspensions

*****Free WIFI And USB Ports Are Available On Select Coaches Only.*****

We Are On The Verge Of Upgrading Our Coach Fleet. *Terms Applies Please Take Note : Product Images Are For Illustrative Purposes Only.

*****仅部分车厢提供免费 WIFI 和 USB 端口。*****

我们即将升级我们的客车车队。 *适用条款请注意：产品图片仅供说明之用。

行程仅供参考, 最终行程可能会根据实际情况进行微调。须符合条规

The itinerary is for reference only, the final itinerary may be fine-tuned according to the actual situation. Terms Apply*



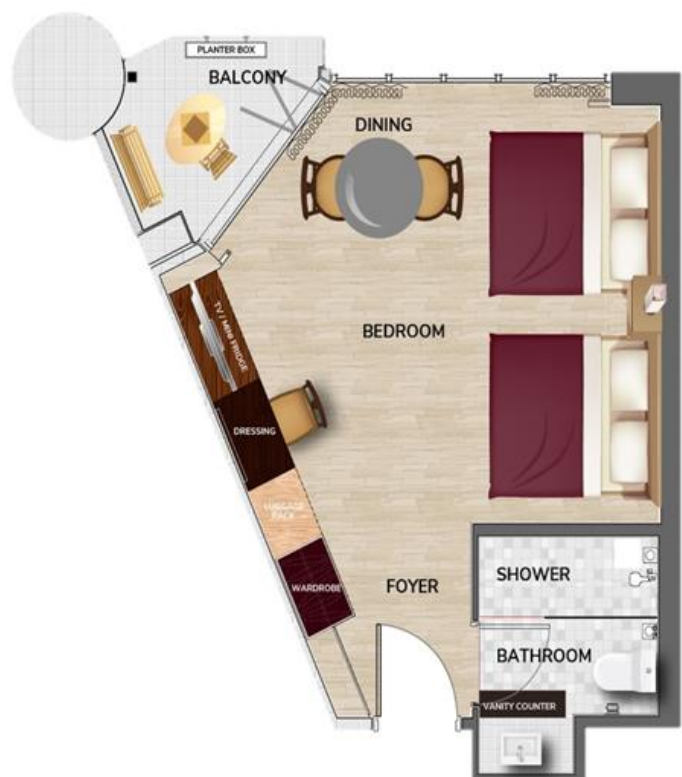
Resort World Awana Superior Deluxe Room

With Dining Table Ideal For Two Adults Only



Facilities & Amenities

- **Tv With Satellite Tv Programmes (Astro)**
- **In-house Movies Channel**
- **Complimentary High Speed WIFI Access**
- **In-house Telephone**
- **Hair Dryer**
- **Tea & Coffee Making Facilities**
- **Electric Water Kettle**
- **Safe Box**
- **Standing Shower**
- **Dining Table**
- **Mini Fridge**
- **Air-conditioned**



所提供的行程及价格仅供参考，最终行程可能根据实际情况进行调整。受条款及细则约束。*

The provided itinerary and price are for reference purposes only; the final itinerary may be adjusted based on the actual circumstances. Terms and conditions apply. *



Resort World Awana Superior Deluxe Sixer Room With 02 Queen Beds And 02 Super Single Bunk Beds, Ideal Up To Six Pax.



Bunk Bed Area Are For Children With A 80kg Weight Limitation.



Facilities & Amenities

- **Tv With Satellite Tv Programmes (Astro)**
- **In-house Movies Channel**
- **Complimentary High Speed WIFI access**
- **In-house Telephone**
- **Safe Box**
- **Mini Fridge**
- **Tea & Coffee Making Facilities**
- **Electric Water Kettle**
- **Air-Conditioned**
- **Standing Shower**
- **Hair Dryer**
- **Slippers**
- **Bath Amenities**

Picture For Illustration Only 图片仅供参考 RWG Website

所提供的行程及价格仅供参考，最终行程可能根据实际情况进行调整。受条款及细则约束。*

The provided itinerary and price are for reference purposes only; the final itinerary may be adjusted based on the actual circumstances. Terms and conditions apply. *

Awana Trail Nature Escapade

Take the path less travelled and be rejuvenated by the beauty of Mother Nature at our nature-inspired resort with the Awana Trail Nature Escapade at Resorts World Awana. Inclusive of a guided nature tour on the Awana Trail with Genting Nature Adventures, marvel at the splendour of the 130-million-year-old rainforest enveloping the resort. This eco-retreat package is perfect for weekend warriors, hiking enthusiasts or those looking for a back-to-nature getaway!

Blazes a Trail

Nestled in between 3,000 to 6,000 ft above sea level, Genting Nature Adventures is one of the planet's oldest and uniquely diverse tropical rainforest experiences, offering an immerse and rich insight in to the biodiversity of Genting Highlands. Discover the never-before-seen natural wonders consisting of both plant life and animal inhabitants that made the highlands their home for millions of years.

Get up close and personal with various fauna and flora - encounter wild Siamangs, beautiful tropical birds and endangered highland pitcher plants. Learn more about them through narrated guided tours and interactive wayfinding as you hike through their majestic natural habitat and incredible landscape.

Resorts World Awana

云顶世界阿娃娜



Discover the embrace of pristine nature

Located just 35 minutes from the Kuala Lumpur city centre, the resort is an ideal destination for a refreshing break from the bustling lowlands. Popular activities include golf at our iconic 18-hole mountainous course, multi-level trekking through our 130-million-year-old rainforest and exotic bird watching.

Resorts World Awana is also home to AYU Awana, Malaysia's first tropical lifestyle restaurant and poolside lounge located in the highlands.

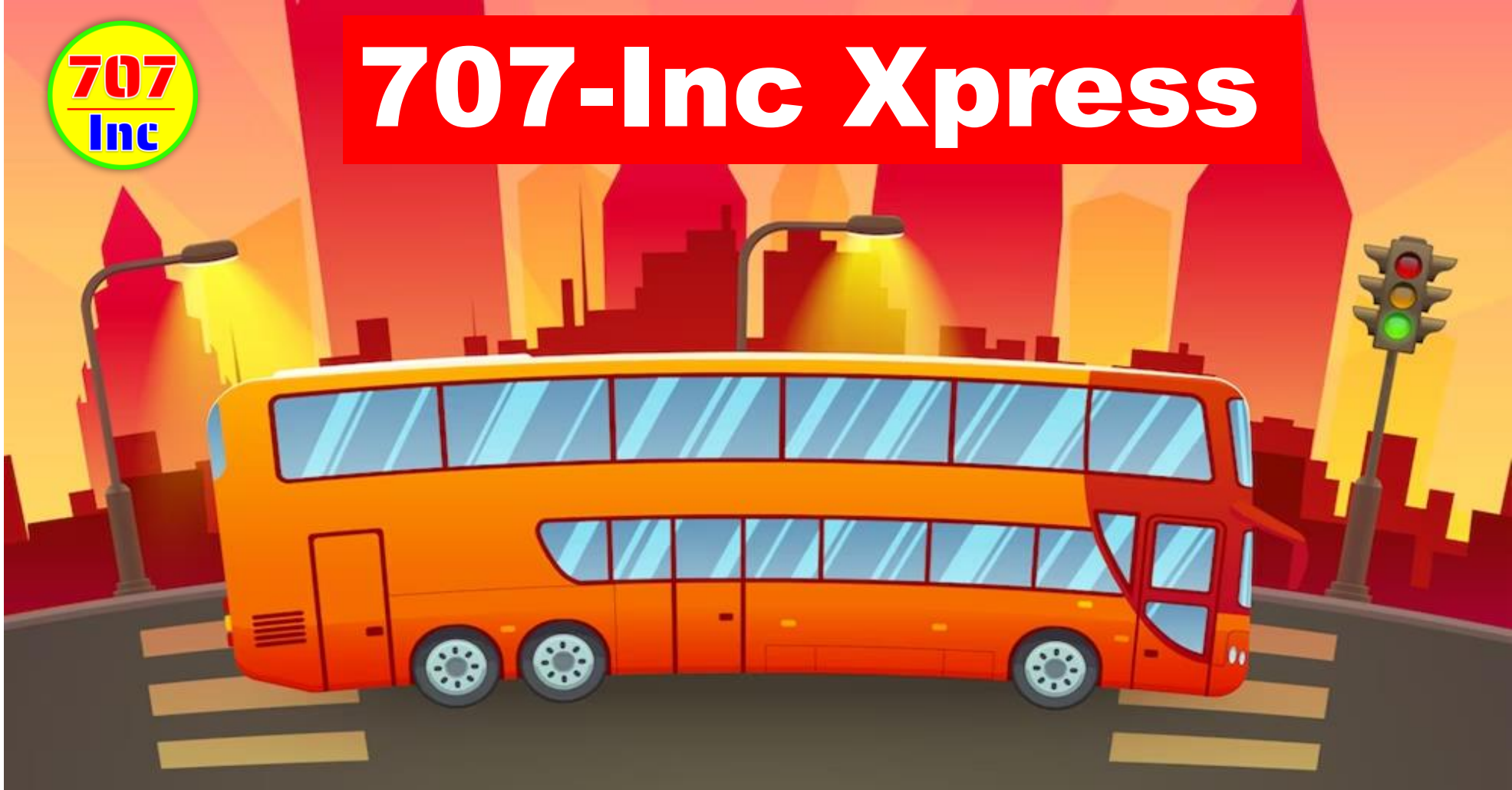
The resort is only a two-minute drive from the Genting Highlands Premium Outlets. Free shuttle service to the premium outlets is provided at regular intervals from the hotel lobby.

所提供的行程及价格仅供参考，最终行程可能根据实际情况进行调整。受条款及细则约束。*

The provided itinerary and price are for reference purposes only; the final itinerary may be adjusted based on the actual circumstances. Terms and conditions apply. *



707-Inc Xpress



✓ Included

✓ **Coach Insurance**

✓ **Coach Transfer**

✓ **Hotel**

✗ Excluded

✗ **Travel Insurance**

✗ **Hotel Tax**

Coach Insurance 巴士上保險 Policy Schedule

For The Benefit Of: Coach Passengers Of The Policyholder Departure Singapore / Return Singapore ONLY 有效:新加坡出发 / 返回新加坡	Maximum Benefit Limit Payable Per Insured Person \$ SGD Singapore Dollars
1. Accidental Death & Permanent Disablement * 80 Years Old Above Coverage \$12,500	\$ 25,000
2. Accidental Medical Expenses	\$ 2,000
3. Emergency Medical Evacuation	\$ 1,000
4. Loss Of Baggage Due To Thief, Burglary Or Robbery (Police Report Required) 需要警方报告	\$ 200

Coverage: Underwritten By Chubb Insurance.

NOT Valid For Malaysia Interstate Travelers

One Way \$5.00

Two Way \$10.00

所提供的行程及价格仅供参考，最终行程可能根据实际情况进行调整。受条款及细则约束。*

The provided itinerary and price are for reference purposes only; the final itinerary may be adjusted based on the actual circumstances. Terms and conditions apply. *

Genting 云顶 707-Inc

Board And Alight Same Location.

Check In At Genting Main Terminal (Hilltop) 707-Inc Counter No. 1 (One) For Bus Number.
Present Your Voucher With Name, Date, Time, and Seat Number To Ground Crew Before Boarding.

在同一地点上车和下车。

请在云顶山顶巴士总站 707-Inc柜台一号报到及询问巴士号码。

在报到时, 请向707-Inc的工作人员出示您包含姓名、日期、时间和座位号的订单



www.707-inc.com

Check In

提早前往办理报到手续

30 Min



Genting Main Terminal (Hilltop)
Board and Alight Point
云顶山顶巴士总站BT3
上下车地点

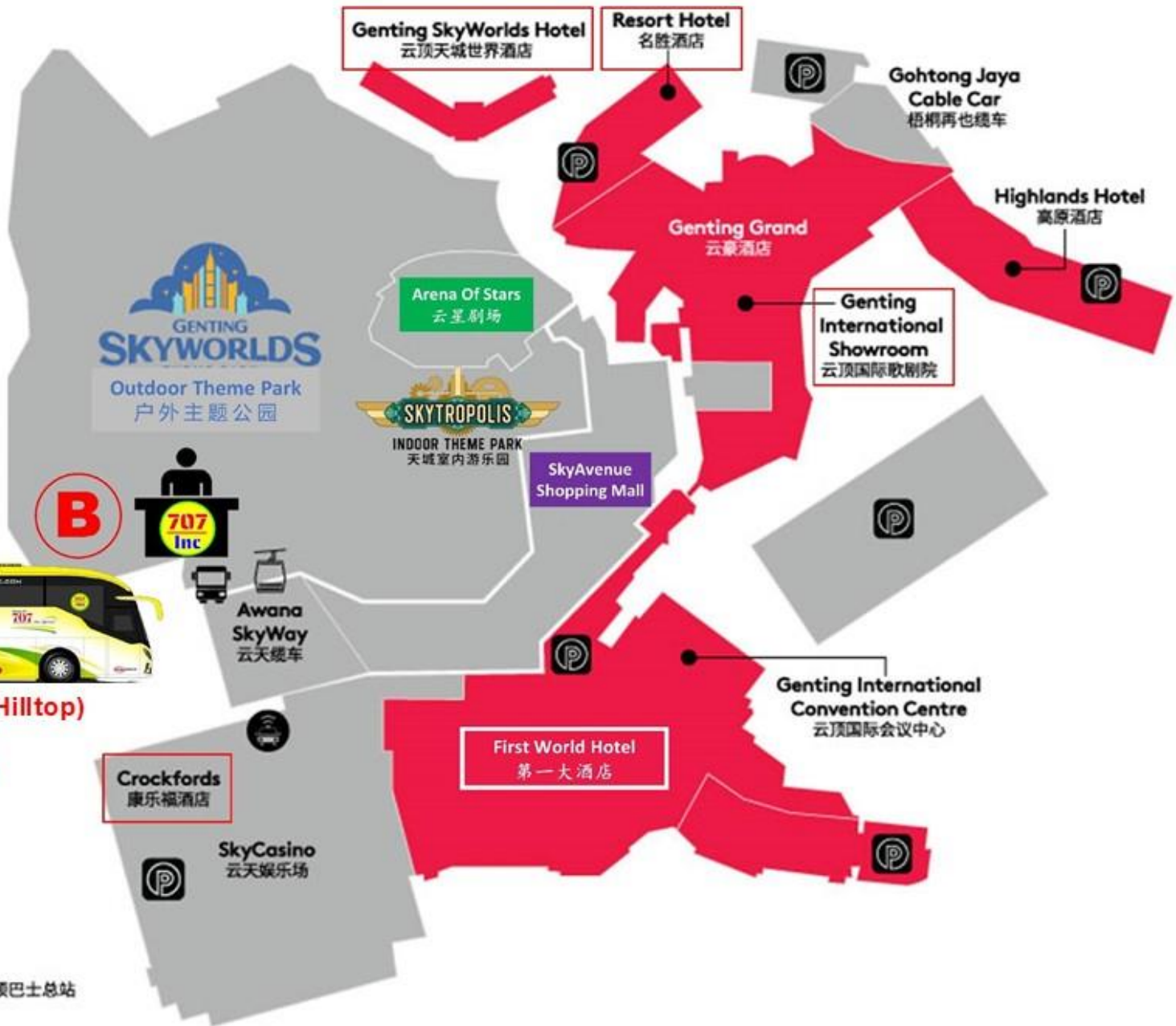
LEGEND 图例



Parking 停车场



Hilltop Bus Terminal 山顶巴士总站



Genting Main Terminal (Hilltop) BT3 / Sky Avenue / Crockfords / First World
Are The Same Location 都在同一位置

Whatsapp Messages Only SG +65 8737 7707. Travel Info: www.707-inc.com/info

Daily 10:00 AM – 4:00 PM



Genting Main Terminal (Hilltop)
Bus Check In / Concert & Events
Redemption Counter

707-Inc No. 1 (One)

云顶山顶巴士总站
巴士车票 / 演唱会和特别活动
门票报到与兑换柜台
707-Inc 柜台一号



所提供的行程及价格仅供参考, 最终行程可能根据实际情况进行调整。受条款及细则约束。*

The provided itinerary and price are for reference purposes only; the final itinerary may be adjusted based on the actual circumstances. Terms and conditions apply. *



Genting 云顶

Place Of Interests

Skytropolis Indoor Theme Park
SkyWorlds outdoor Theme Park
Awana SkyWay
Genting Entertainment Facility
BigTop Video Games Park
Vision City Video Games Park
Sky VR
Genting Snow World
Ripley's Believe It Or Not
Genting Bowl

好玩景点

天城室内主题乐园
 天城世界主题乐园
 云天缆车
 云顶娱乐设施
 大本营电玩城
 梦幻电玩城
Sky VR
 云顶雪世界
 云顶信不信由你
 云顶保龄球场

Surrounding Explore

Chin Swee Caves Temple
Lim Goh Tong Memorial Hall
Genting Strawberry Leisure Farm
Gohtong Jaya
World of Phalaenopsis
Happy Bee Farm
Awana Horse Ranch

外围探索

清水岩庙
 林梧桐纪念馆
 云顶草莓园
 梧桐再也
 蝴蝶兰世界
 蜜蜂园
 牧马场

Food & Night Life Explore

Malaysian Food Street
Jom Makan Street Food
Genting Garden Hotpot
Starbucks Coffee
Han's Cha Chuan Teng
Burger & Lobster
Five Guys
Motorino Pizzeria
The Laughing Fish by Harry Ramsden
High Line
FUHU Restaurant
Zouk Genting
Cloud 9 Casual bar
Redtail Karaoke

美食与夜生活探索

马来西亚美食街
Jom Makan美食街
 云顶花园火锅
 星巴克咖啡
 汉记茶餐厅
 天台休闲美食街
 福虎餐厅
Zouk 夜店
Cloud 9 休闲酒吧
 卡拉ok

Shopping & Relax

SkyAvenue Complex
First World Complex
Genting Grand Complex
Genting Premium Outlets
Awana SkyCentral

购物与放松

云天综合大楼
 第一综合大楼
 云豪综合大楼
 云顶名牌折扣购物中心

所提供的行程及价格仅供参考，最终行程可能根据实际情况进行调整。受条款及细则约束。*

The provided itinerary and price are for reference purposes only; the final itinerary may be adjusted based on the actual circumstances. Terms and conditions apply. *



Resorts World
GENTING

FLASH

SALE

Open Dated
Theme Park Tickets

日期开放式

\$43 主题公园门票



SkyWorlds Theme Park: Theme Park Ride

www.gentingskyworlds.com/

- * SkyWorlds Outdoor Theme Park.
- * Redemption At 707- Inc Counter.
- * Closed Every Tuesday.
- * Except Malaysia Public Holidays.
- * No Amendment, Cancellation or Revalidate.
- * Ticket Sold NO REFUND. (Rain or Shine)

Auspicious Package

Dynamic Pricing Subject To Change, Limited Allotment

价格有变动的可能, 售完为止



Business Account

WhatsApp +65 8710 7707



www.707-inc.com

Favored ★★★★★ Sold 108 008

所提供的行程及价格仅供参考, 最终行程可能根据实际情况进行调整。受条款及细则约束。*

The provided itinerary and price are for reference purposes only; the final itinerary may be adjusted based on the actual circumstances. Terms and conditions apply. *